

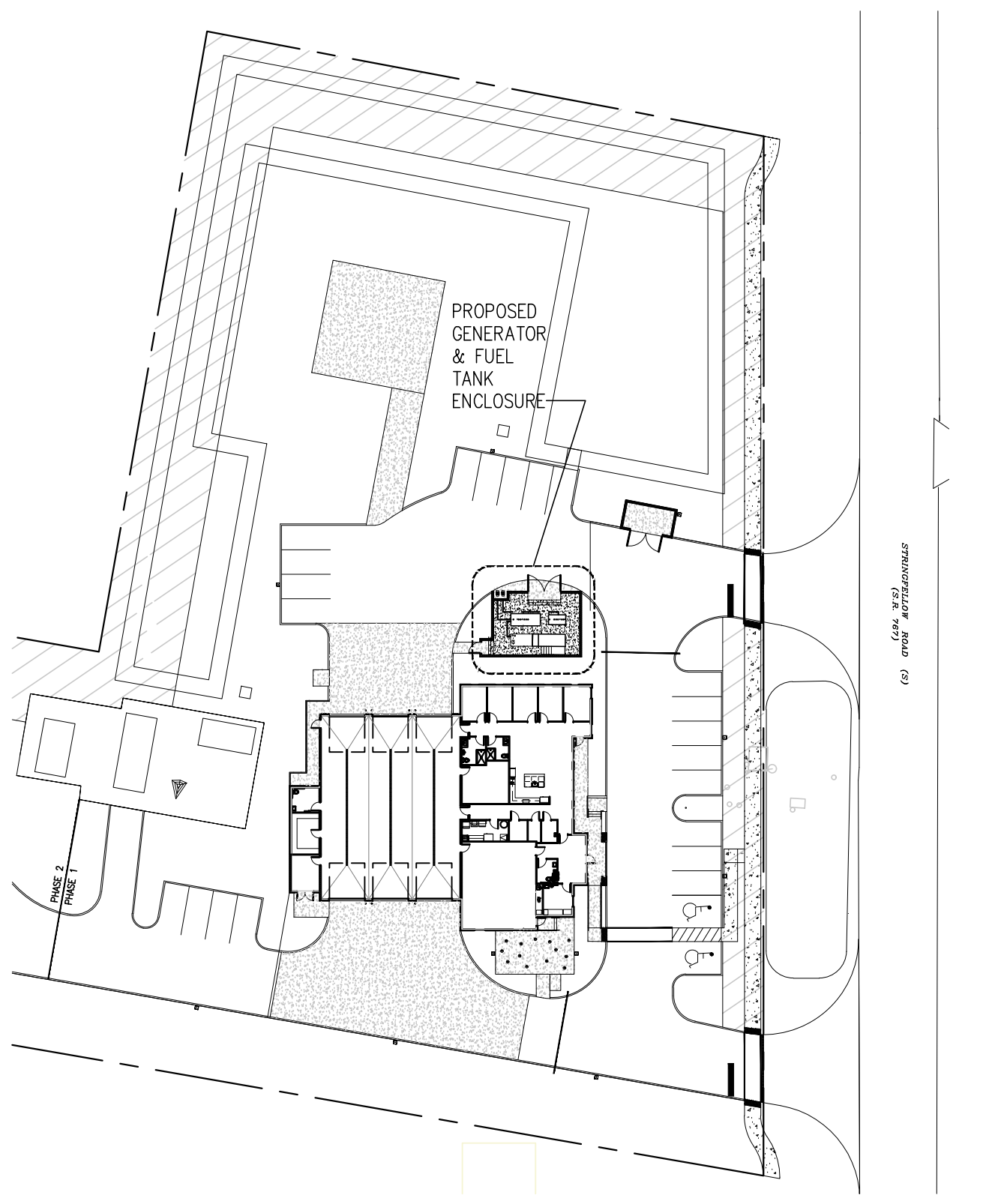
CODE DATA

BUILDING CODE: FLORIDA BUILDING CODE, 8TH EDITION 2023 BUILDING CODE REQUIREMENTS FOR STRUCTURAL CONCRETE - (ACI 318-19)
 SPECIFICATIONS FOR STRUCTURAL CONCRETE - (ACI 301-20, ACI 332)
 BUILDING CODE REQUIREMENTS FOR MASONRY STRUCTURES - (ACI 530/530.1-13)

WIND DESIGN

RISK CATEGORY: IV
 EXPOSURE: C
 BASIC WIND SPEED: 182 MPH ASCE 7-22 CHAPTER 26

KEY PLAN (N.T.S.)



STAIR, HANDRAIL & GUARD RAIL NOTES:

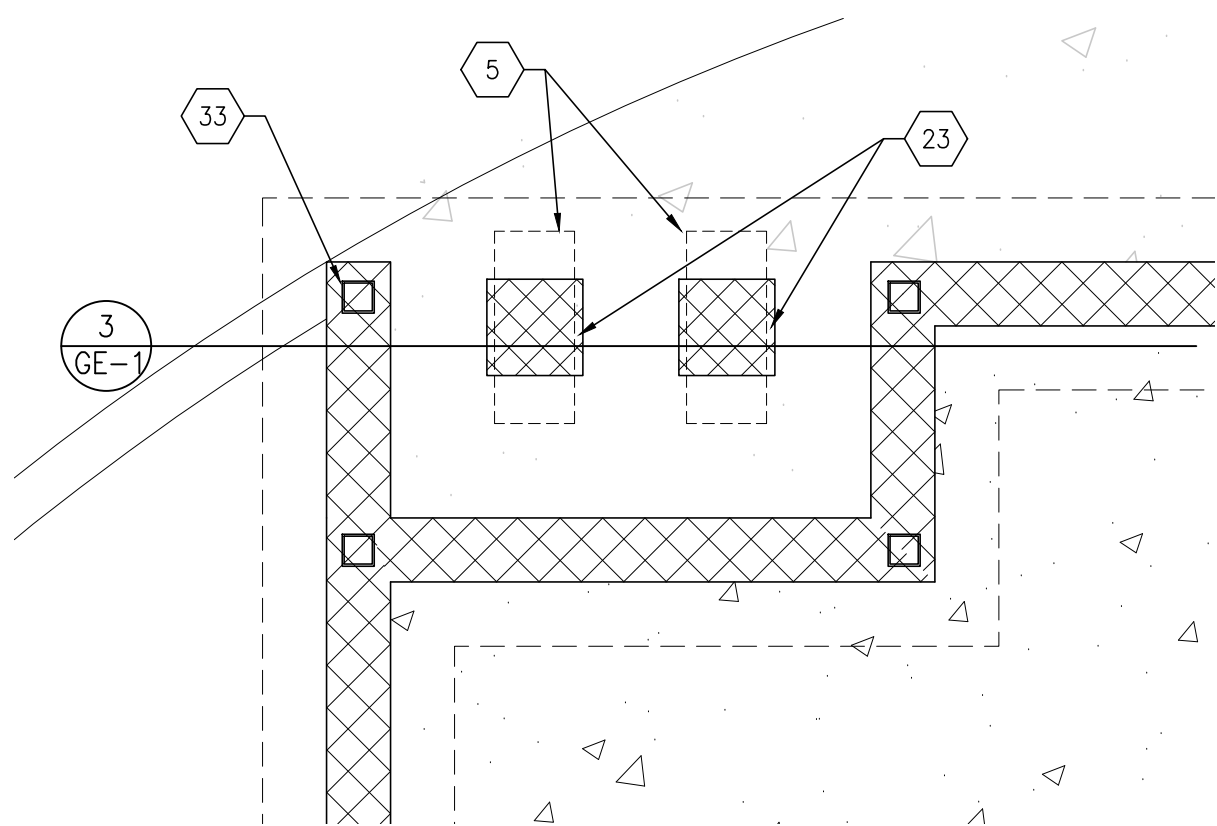
- ALUMINUM STAIRS, LANDINGS, RAILINGS AND ALL SUPPORTS ARE TO BE DESIGNED BY THE STAIR FABRICATOR AND SHOP DRAWINGS SUBMITTED FOR APPROVAL.
 - STAIR SHALL HAVE HANDRAIL ON EACH SIDE WITH A 12" EXTENSION AT EACH END (HORIZONTALLY AT THE TOP). EXTENSION CAN WRAP THE ADJACENT WALL IF IT IMPEDES A WALKING PATH OR CLEAR SPACE.
 - HANDRAILS SHALL HAVE EITHER A CIRCULAR CROSS SECTION WITH A DIAMETER OF 1-1/4 INCHES TO 2 INCHES OR A NON CIRCULAR CROSS SECTION WITH A PERIMETER DIMENSION OF AT LEAST 4 INCHES BUT NOT MORE THAN 6-1/4 INCHES AND A LARGEST CROSS SECTION DIMENSION NOT EXCEEDING 2-1/4 INCHES. EDGES SHALL HAVE A MINIMUM RADIUS OF 1/8 INCH.
 - GRIPPING SURFACE SHALL BE CONTINUOUS, WITH OUT INTERRUPTION BY NEMEL POSTS OR OTHER OBSTRUCTIONS.
 - CLEAR SPACE BETWEEN HANDRAIL AND WALL SHALL BE A MINIMUM OF 1-1/2 INCHES.
 - HANDRAILS, WHERE REQUIRED ALONG OPEN-SIDED FLIGHTS OF STAIRS, SHALL BE OF CONSTRUCTION ADEQUATE IN STRENGTH, DURABILITY AND ATTACHMENT FOR THEIR PURPOSES AS SPECIFIED IN FBC SECTION 1014 HANDRAILS.
 - GUARDRAILS SHALL FORM A VERTICAL PROTECTIVE BARRIER NOT LESS THAN 42 INCHES HIGH.
 - OPEN GUARDRAILS SHALL HAVE INTERMEDIATE RAILS OR ORNAMENTAL PATTERN SUCH THAT A 4 INCH DIAMETER SPHERE CANNOT PASS THROUGH ANY OPENING UP TO A HEIGHT OF 34 INCHES. A BOTTOM RAIL OR CURB SHALL BE PROVIDED THAT WILL REFLECT THE PASSAGE OF 2 INCH DIAMETER SPHERE.
- EXCEPTION:
 1. A 6 INCH SPHERE SHALL NOT PASS THROUGH THE TRIANGULAR OPENING FORMED BY A TREAD, RISER AND BOTTOM OF A GUARDRAIL.
- CONSTRUCTION OF GUARDRAILS SHALL BE ADEQUATE IN STRENGTH, DURABILITY AND ATTACHMENT FOR THEIR PURPOSE AS DESCRIBED IN FBC SECTION 1015 GUARDS.
 - MAXIMUM STAIR RISER HEIGHT TO BE 7", MINIMUM TREAD DEPTH 11".

KEYNOTES

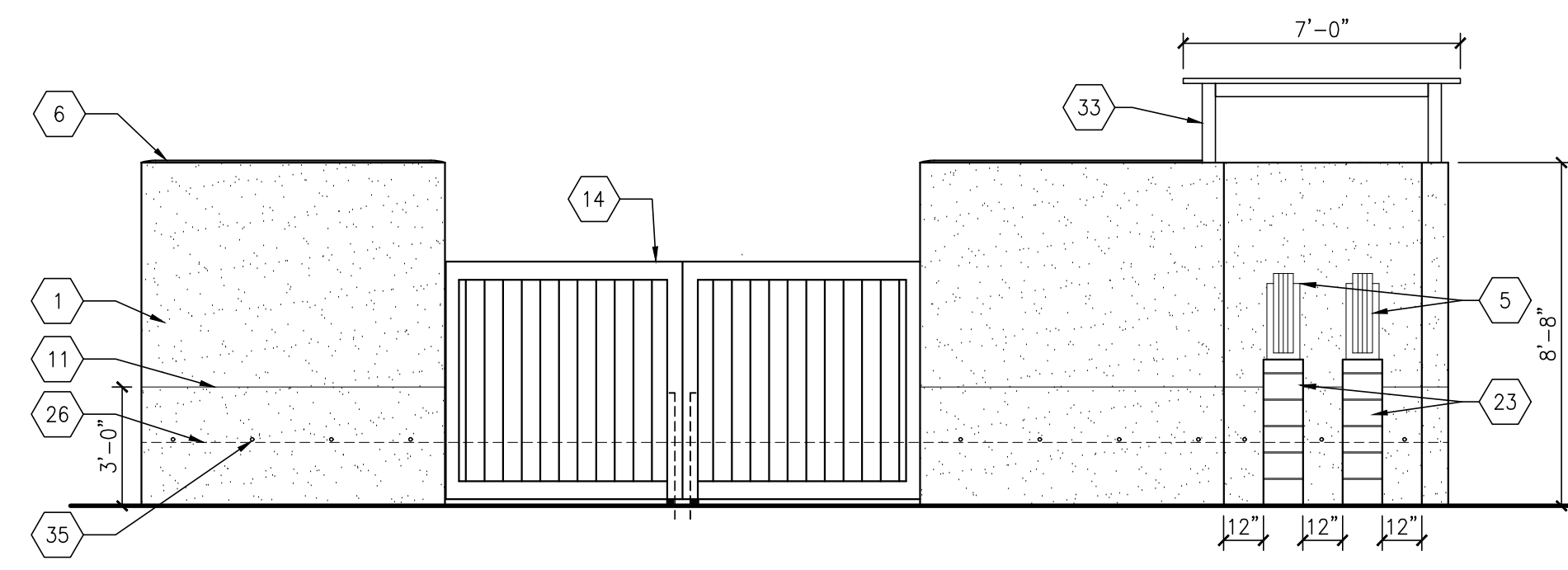
1	SAND/FLOAT STUCCO, PAINTED SAME AS BUILDING, EXTERIOR SIDE ONLY. REF. DETAIL 3/A-9
2	HOOKED DOWEL TO MATCH SIZE & SPACING OF VERTICAL WALL REINFORCING
3	BOND BEAM W/(2) #5 CONT.
4	8" CMU WALL W/ #5 REBAR @ 48" O.C. VERTICAL IN CONC. FILLED CELLS. PROVIDE FILLED CELLS W/#5 AT ALL CORNERS AND ENDS.
5	FUEL PUMP REELS BY FUEL TANK SUPPLIER. COLOR CODE (PAINTED) TO MATCH TANK
6	STUCCO WASH
7	SLAB CONTROL JOINT AS SHOWN
8	250 GALLON UNLEADED FUEL TANK (SEPARATE PERMIT)
9	FUEL TANK AND GENERATOR PAD: 8" BROOM FINISH CONCRETE SLAB ON GRADE W/ #4 @ 12" O.C. EACH WAY TOP & BOTTOM.
10	PAINTED CMU TO MATCH STUCCO EXTERIOR
11	STUCCO CONTROL JOINT
12	1/2" FIBER EXPAN. JOINT
13	COMPACTED FILL SHALL BE A MINIMUM OF 30", A-3 SELECT SOIL (AASHTO M145) W/MAX. 5% PASSING #200 SIEVE, COMPACTED TO 95% MAX. DENSITY

14	(2) 6'-0"W. x 6'-0"H. WELDED LOCKING ALUMINUM MULTI SLAT TONGUE AND GROOVE SYSTEM SWING GATES WITH DROP PIN ANCHOR AND SLEEVE BY EASTERN METAL SUPPLY OR APPROVED EQUAL. PROVIDE WHEELS @ EACH DOOR BOTTOM (IF MFR. RECOMMENDED)
15	4'-0"W. x 6'-0"H. WELDED LOCKING ALUMINUM MULTI SLAT TONGUE AND GROOVE SYSTEM SWING GATE/DOOR BY EASTERN METAL SUPPLY OR APPROVED EQUAL.
16	CONCRETE PAVING ON LIMEROCK AND COMPACTED FILL, REF. CIVIL DWGS.
17	6" GALVANIZED STEEL PIPE BOLLARD FILLED SOLID WITH SAND OR GRAVEL. FILL TOP 12" WITH GROUT, REF. DET. 8. PAINT "SAFETY YELLOW". (LOCATIONS ARE RECOMMENDATIONS, VERIFY FEASIBILITY OF FINAL BOLLARD LOCATIONS WITH OWNERS)
18	4" SOLID PRECAST BLOCK CAP
19	LINE OF FOOTING BELOW
20	CONCRETE FOOTING
21	CONT. CONCRETE FOOTING W/(1) #5 CONT. TOP & BOTTOM
22	#5 REBAR @ 12" O.C.
23	12" COLUMN BLOCK POST FILLED SOLID WITH (4) #5 VERTICAL & #3 TIES @ 8", PAINT TO MATCH ENCLOSURE, SEE DETAIL 3 THIS SHEET
24	GROUT CROWN
25	BROOM FINISH 4" CONCRETE SLAB ON GRADE W/ 6 X 6 - W1.4 X W1.4 WWF

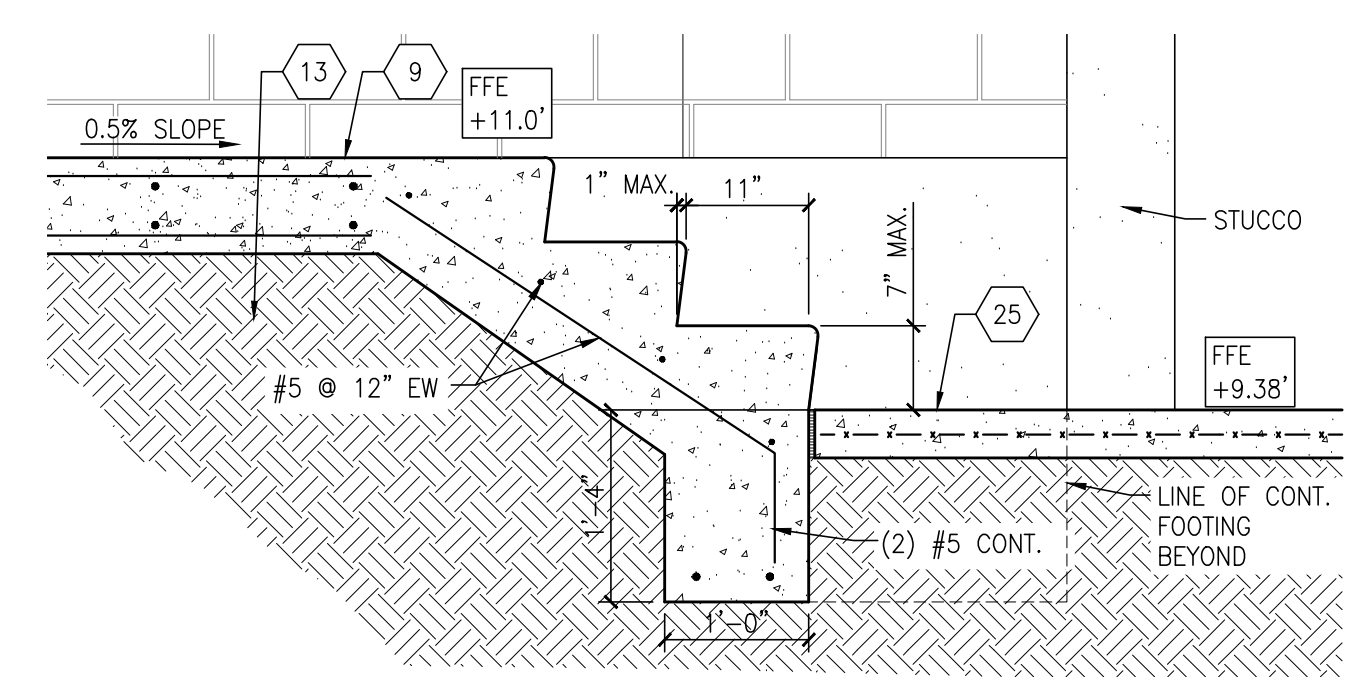
26	LINE OF GENERATOR AND FUEL TANK FINISHED SLAB
27	1000 GALLON DIESEL TANK FOR VEHICLE & GENERATOR SUPPLY (SEPARATE PERMIT)
28	SEE DETAIL 2 THIS SHEET FOR ENCLOSURE WALL DETAILS
29	CONCRETE FOOTING W/(3) #5 CONT.
30	FUEL TRANSFER PUMP FOR GENERATOR, FILL-RITE OR EQUAL
31	FUEL PIPING BY FUEL TANK SUPPLIER (SEPARATE PERMIT)
32	150 KW GENERATOR BY GENERAC WITH 500 GALLON BELLY TANK. NO SUBSTITUTIONS. (SEPARATE PERMIT)
33	5'-0" X 7'-0" PRE-ENGINEERED POST SUPPORTED ALUMINUM CANOPY OVER FUEL PUMPS TO BE SUBMITTED UNDER A SEPARATE PERMIT. ANCHOR POSTS TO I.O. BLOCK WALL.
34	36"W. CLEAR ALUMINUM STAIRS WITH 42"H. GUARDRAIL (IF HEIGHT EXCEEDS 30") AND 36"H. HANDRAIL TO BE DESIGNED AND FABRICATED BY THE STAIR DESIGNER UNDER A SEPARATE PERMIT. SEE STAIR AND RAILING GENERAL NOTES THIS SHEET FOR CODE DESIGN STANDARDS.
35	WEEP HOLES @ FIN. SLAB HEIGHT @ 24" O.C.
36	FILL ALL CELLS BELOW THE GENERATOR SLAB



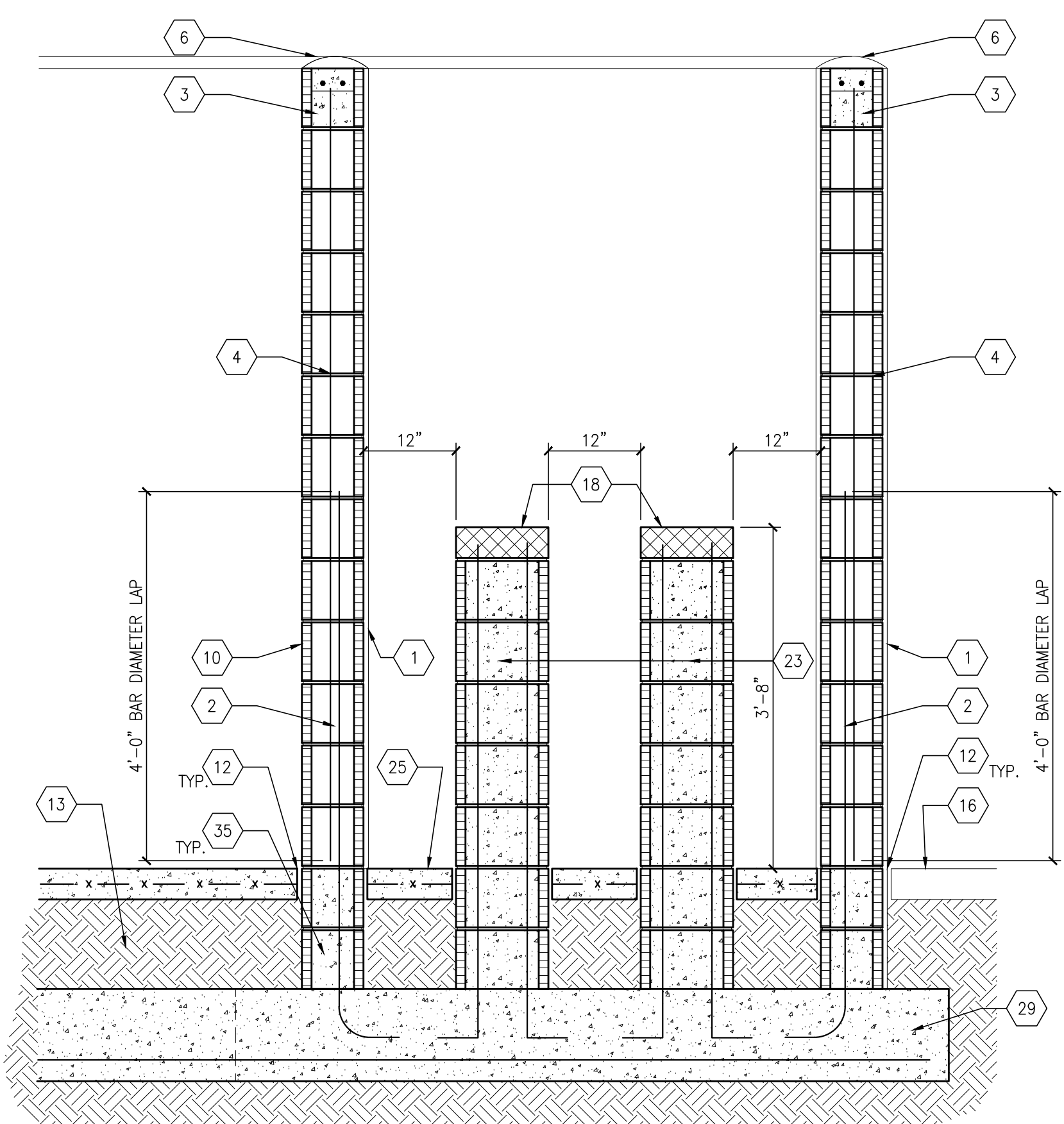
5 ENLARGED PLAN @ FUEL PUMPS
 1/2" = 1'-0"



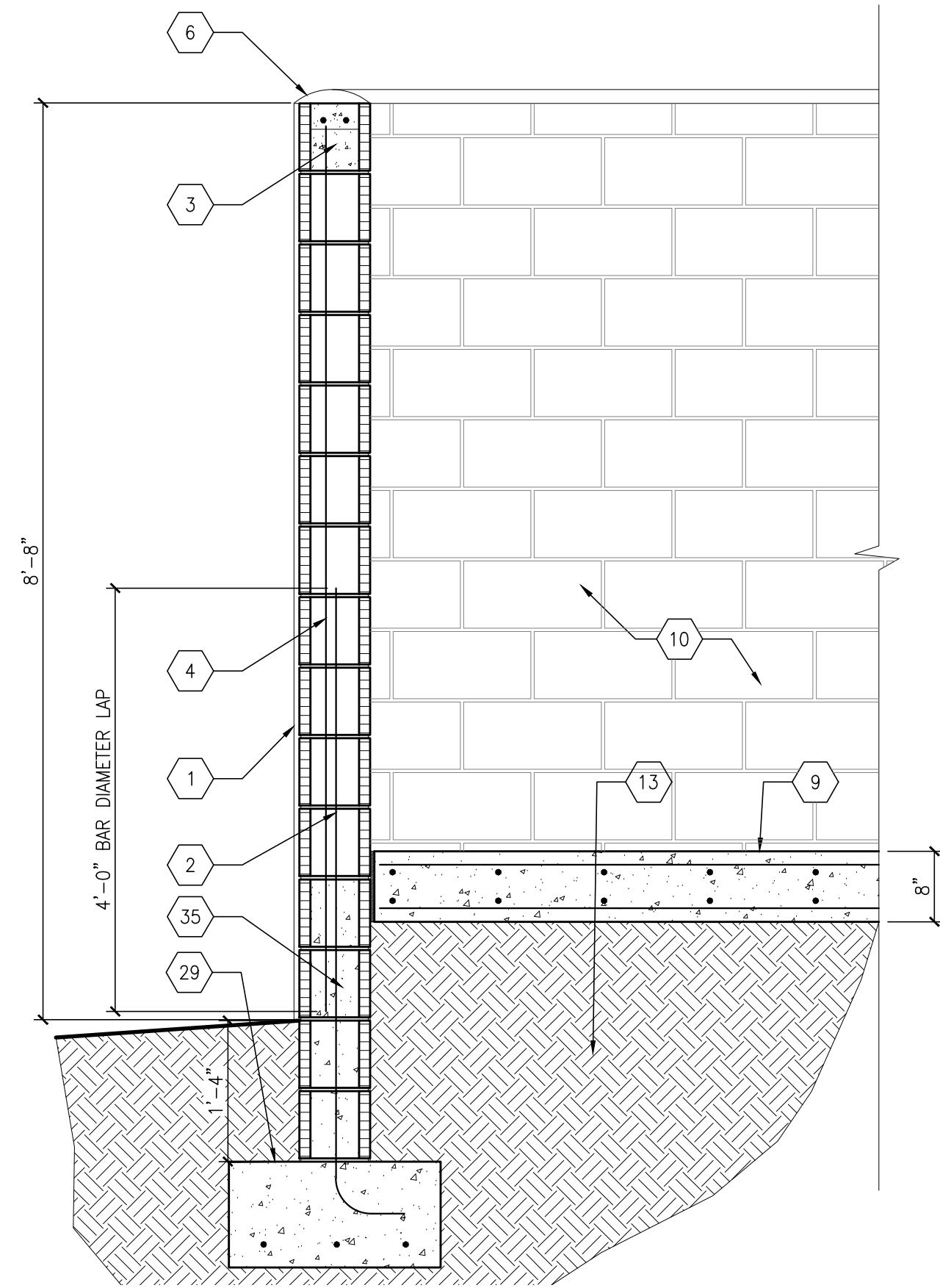
4 GENERATOR & FUEL TANK ENCLOSURE FRONT ELEVATION
 1/4" = 1'-0"



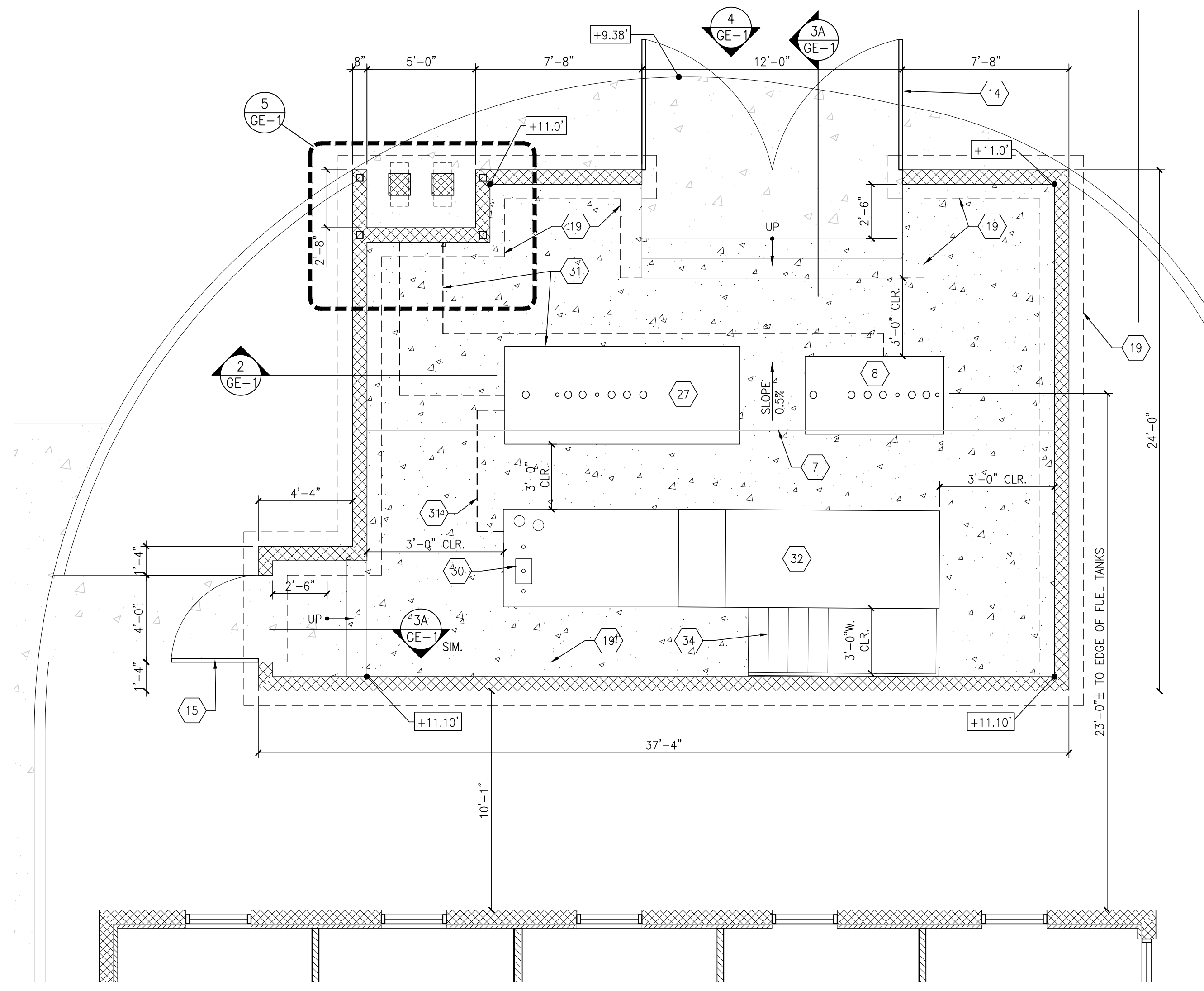
3A STAIR SECTION @ GENERATOR PAD
 3/4" = 1'-0"



3 FUEL PUMP POSTS
 3/4" = 1'-0"



2 GENERATOR & FUEL TANK ENCLOSURE SECTION
 3/4" = 1'-0"



1 GENERATOR & FUEL TANK ENCLOSURE PLAN
 1/4" = 1'-0"

GENERATOR & FUEL TANK ENCLOSURE FOR:
 ST. JAMES CITY FIRE STATION #2
 5015 STRINGFELLOW ROAD
 ST. JAMES CITY, FL 33956

CASTELLANOS + TRAMONTE ARCHITECTS
 1228 LAFAYETTE STREET SUITE #1 CAPE CORAL, FLORIDA 33904
 (239) 549-0997 AA 26003303

DRAWN BY	BAM
CHECKED BY	BAM
ISSUED FOR:	
PERMIT SET	4/16/25
PERMIT REVISIONS	9/9/25

ARCHITECT/ENGINEER STAMP

DRAWING NAME:
 GENERATOR & FUEL TANK ENCLOSURE PLAN & DETAILS

SHEET
GE-1

THIS DOCUMENT IS THE EXCLUSIVE PROPERTY OF CASTELLANOS + TRAMONTE ARCHITECTS. THE DOCUMENT AND INFORMATION IT CONTAINS MAY NOT BE REPRODUCED OR USED FOR OTHER THAN THE SPECIFIC PROJECT FOR WHICH IT WAS PREPARED WITHOUT THE EXPLICIT CONSENT OF CASTELLANOS + TRAMONTE ARCHITECTS.